



LIU

LEBANESE INTERNATIONAL UNIVERSITY

Education for All

Our NUMBERS Speak



31,420

Undergraduate Alumni

Over
40,000

Graduate Alumni

9

Campuses
in Lebanon



3

Sister
universities
Abroad

Over

41



National & International
Affiliations & Partnerships



99%

Success in
Pharmacy
Colloquium
Exam



47

Clubs
&
Sports
Teams



62

Student
Nationalities

5

Schools



40⁺

Majors

95%

Success in
Nutrition
Colloquium

45

Years in
Education

How to JOIN OUR FAMILY

STEP 01

GETTING INFORMATION

Click [here](#) to talk to our Admissions Team. You can ask them any questions you have (ex: what documents you need to apply to LIU, how to fill an application, etc)

STEP 02

FILLING THE APPLICATION

Fill the application, submit the required documents, choose a date for your Entrance Placement Test and submit a photo of yourself.

STEP 03

ENTRANCE PLACEMENT TEST ONLINE

Log in and do your online Placement Tests after paying the application and exam fees.

STEP 04

THE RESULT

Log in again on the same day to get your result of your Placement Test and to get your virtual LIU student ID card.

STEP 05

REGISTER YOUR COURSES

You will receive your LIU student ID number and password. Log in to the system and register your courses. You can ask for the help of an advisor [here](#).

WE SUPPORT YOU

Through our

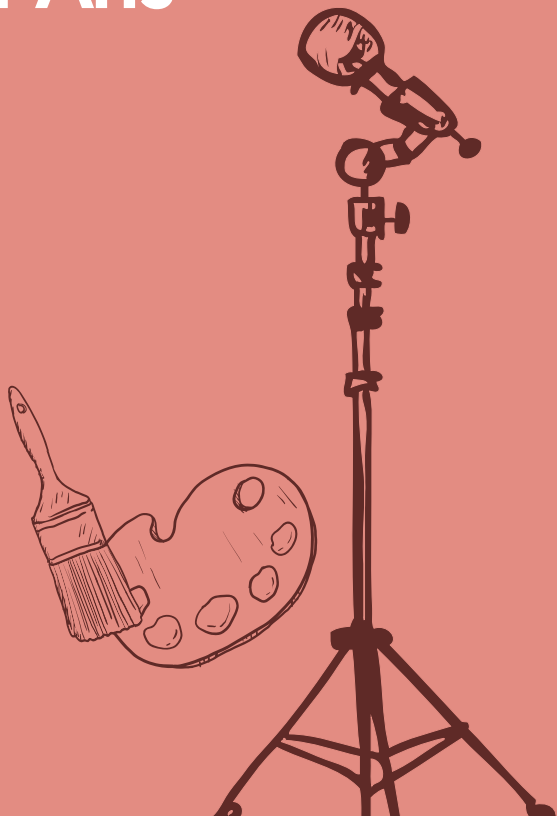
Financial Aid Program.

All new students can apply for Financial Aid, except those who want to major in Pharmacy. The Financial Aid relies on two important conditions: (1)The academic achievement of the student in school -especially grade 12- and the LIU Placement Test; (2)The financial need of the student. You also have the option to divide your tuition payments to four payments per semester, or eight payments per year. You can apply for Financial Aid through the online UMS or by contacting our office.

ARTS



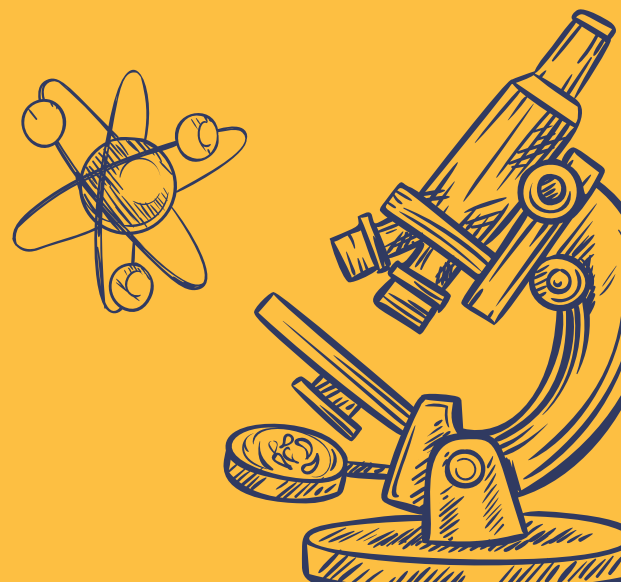
School of Arts



SCI



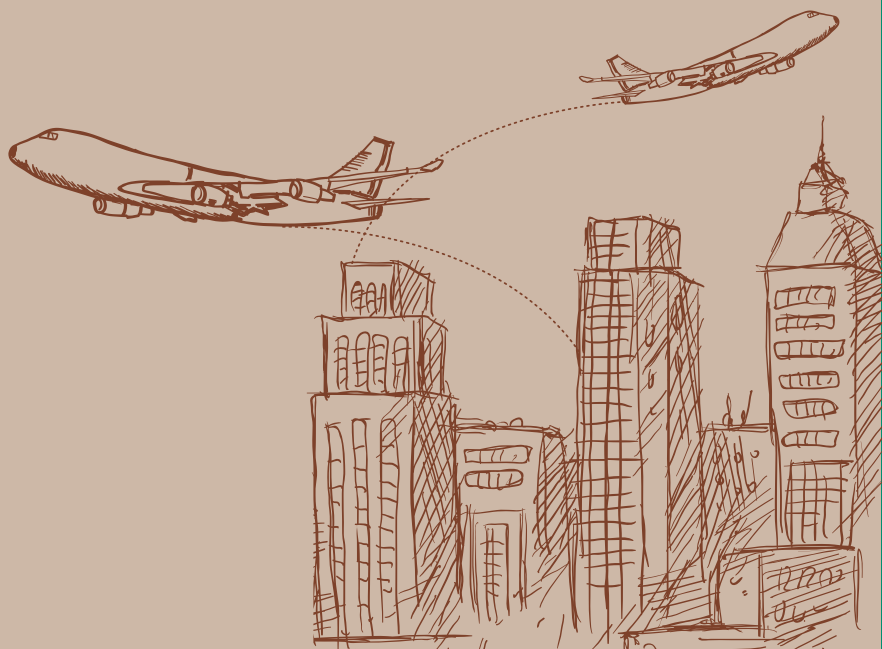
School of Sciences



BUS



School of Business



PHAR



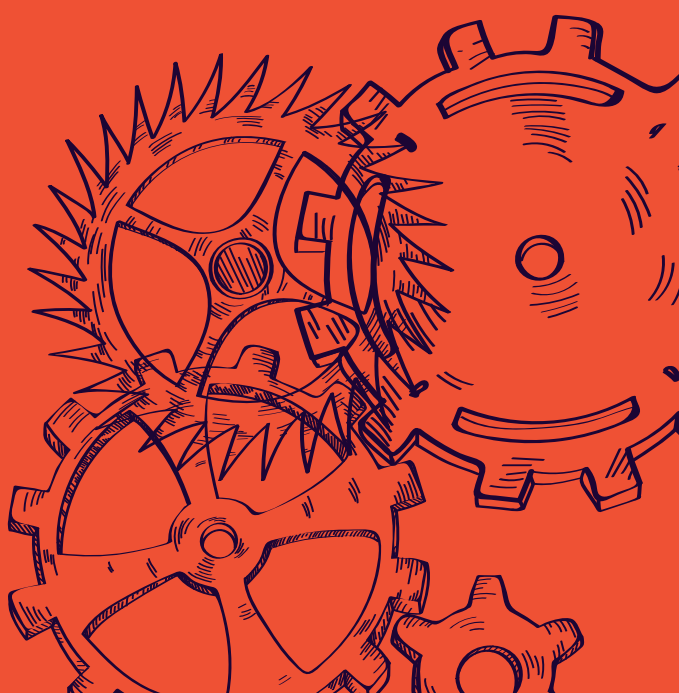
School of Pharmacy



ENG



School of Engineering



EDU



School of Education



INTERNATIONAL ACCREDITATIONS



LIU has achieved **international recognition** through accreditation from both Hcéres in France and ACPE in the United States for its commitment to high standards in research and education.

Hcéres, the High Council for Evaluation of Research and Higher Education, accredited LIU for its excellence in research and education, highlighting the institution's significant contributions to the academic landscape. Simultaneously, **LIU's School of Pharmacy** earned accreditation from the Accreditation Council for Pharmacy Education (**ACPE**), attesting to the school's adherence to quality standards in pharmacy education.

These dual accreditations reinforce LIU's international standing as an institution dedicated to excellence in research and education.



Get the Most Out of Your **CAMPUS EXPERIENCE**

Get Together Ceremony

Pharmacy Day

Pre-Graduation Celebration





Amphi-Theater

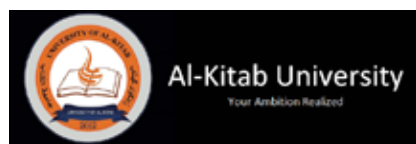
Library



Mac Labs



Explore Opportunities Through Our AFFILIATIONS & PARTNERSHIPS



Beyond STUDYING



Graduation Ceremony

International Conferences



CONTACT US



@lebintuni



01 70 50 80



www.liu.edu.lb